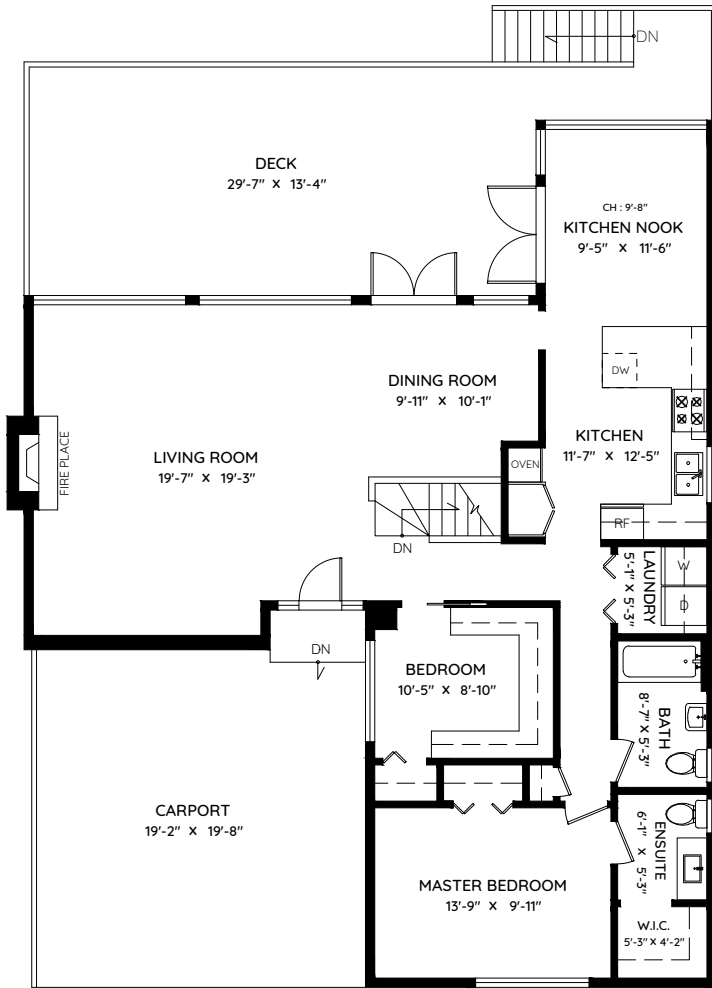


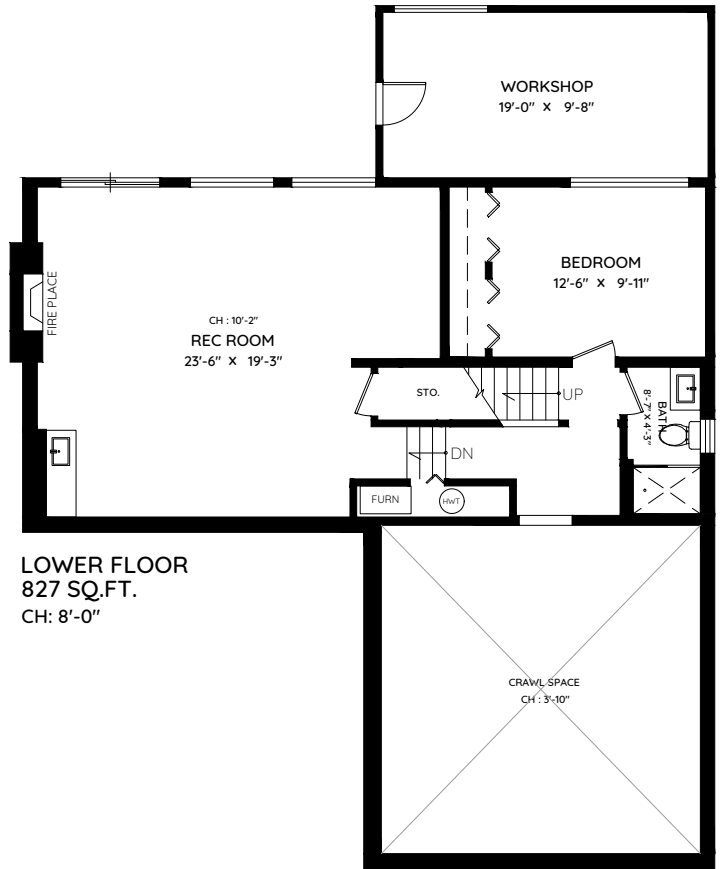
3955 ST PAULS AVENUE

NORTH VANCOUVER, BC

MAIN	1,333 SQ.FT.	CARPORT	383 SQ.FT.
LOWER	827 SQ.FT.	DECK	485 SQ.FT.
TOTAL	2,160 SQ.FT.	WORKSHOP	198 SQ.FT.
		TOTAL	1,066 SQ.FT.



MAIN FLOOR
1,333 SQ.FT.
CH: 8'-0"



LOWER FLOOR
827 SQ.FT.
CH: 8'-0"



0 ft 3 ft 5 ft

The floor plan and the measurements are approximate within +/- 2% and are to be used for advertising usage only. Not suitable for architectural or construction. May include unfinished area. Not suitable for architectural or construction. E&O Insured